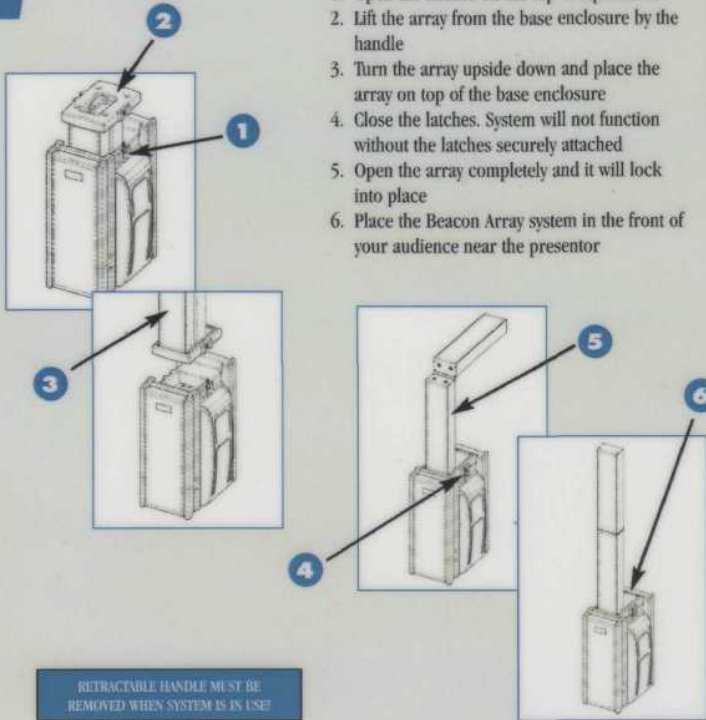


1 Set-Up the Beacon Array

1. Open the latches on the top compartment
2. Lift the array from the base enclosure by the handle
3. Turn the array upside down and place the array on top of the base enclosure
4. Close the latches. System will not function without the latches securely attached
5. Open the array completely and it will lock into place
6. Place the Beacon Array system in the front of your audience near the presenter



Put away the Beacon Array

1. Turn off the Power
2. Fold the array - apply slight pressure to engage clip between the array sections
3. Open the latches and lift off the base
4. Turn the array over and slide the array into base enclosure
5. Close the latches
6. Your Beacon is now ready to be stored
7. Telescope up handle and roll away

